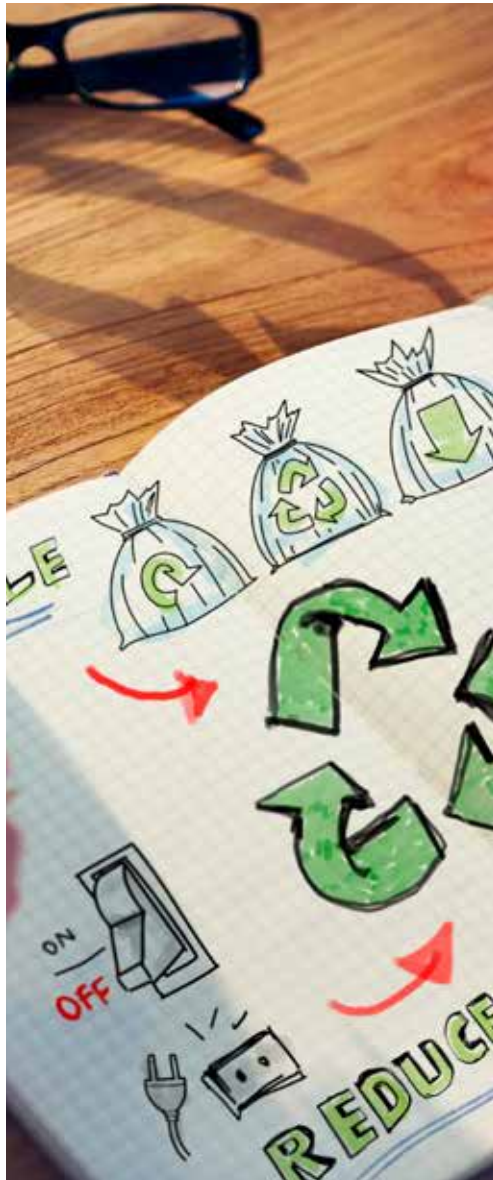


CLOSING THE LOOP

# ArmaPET<sup>®</sup> Cut-Off Reception

Armacell will receive the ArmaPET cut-off waste after your kitting operations to convert it into recycled post-consumer PET granules. And make it circulating for longer with higher added value.

[www.armacell-core-foams.com](http://www.armacell-core-foams.com)



 **armacell**<sup>®</sup>  
MAKING A DIFFERENCE AROUND THE WORLD

# ARMAPET CUT-OFF RECEPTION

For many years now, Armacell has been involved in the conversion of recycled PET into foams. This is our contribution to a global switch from the traditional 'make-take-dispose' economy to a circular model based on 'reduce-reuse-recycle'. It's about closing the loop in the life cycle of plastics, making them circulate for longer and with higher added value. Armacell has perfected the process of rPET upcycling and today we are ready to take the next step: to take back Armacell's PET foam cut-offs from kitting operations or similar and convert them into recycled post-consumer PET granules.



In its **Closing The Loop** programme, Armacell will receive the post-industrial ArmaPET material that is left over as cut-off waste after conversion at the customers' premises.

There are several criteria of approval for return of the waste, the most important of which is lack of contamination. By contamination Armacell mean the presence of any kind of materials other than PET foam, whether organic or inorganic.

The impurities may come from:

- // direct conversion operations (e.g. lamination or gluing)
- // using the same machinery for processing different types of materials (e.g. dust from processing other foams than PET types of foam (PVC, SAN) or balsa wood)
- // storage and transport operations, in the case of improper or damaged packaging (e.g. metals, stones, paper, foil, water or leaves)

## THE APPROVED OPERATIONS ARE:

- // Cutting
- // Grooving
- // Perforation
- // Double contour
- // Thermoforming
- // Thermal welding
- // Sanding

## THE FORBIDDEN OPERATIONS ARE:

- // Gluing
- // Lamination
- // Scrim application
- // Resin infusion
- // Combinations with other materials (resins, skins, coatings, adhesives, etc.)

## EXAMPLES OF CONTAMINATION IDENTIFIED IN THE RETURNED ARMAPET STREAM

---

**aluminium foil**



**piece of wood**



**plastic film**



**paper**



**foam other than PET type**



**steel wire**



**PET straps**



**pen and marker**



**cardboard**



## 4// CLOSING THE LOOP

### IF CONTAMINATION IS IDENTIFIED:

---



// In the case of the **first delivery** containing impurities, the supplier will receive a **contamination report** and will be asked to improve the internal processes to eliminate the source of non-conformities.

// In the case of **every contaminated delivery after the first**, participation in the **Closing The Loop** programme will be terminated and the full delivery will be returned to the customer, with transportation costs charged to customer.

ArmaPET cut-off reception and return to the recycling loop means transporting lightweight material over a certain distance.

The impact of transportation will be taken into account by the customer. The efficiency will be dictated by comparing the cost to current or alternative waste disposal methods. Depending on the location or your plant, it might be more efficient to send the material to Armacell or to one of **Armacell's approved recycling** plants.

Another condition of eligibility for the **Closing The Loop** programme is the **quantity** of collected waste. The minimum volume is one full truck load, so smaller amounts should be collected and stored until the minimum volume is reached.

### PRODUCT PACKAGING GUIDELINE:

---



// Large boards should be collected on wooden pallets and properly secured for safe logistics and storage operations (e.g. using PET straps and stretch foil).

// The boxes could be stacked in a truck.

// The material should be protected from the impact of atmospheric conditions during transport and storage.

// The material should not be stored outside.

// Smaller pieces should be collected in Gaylord boxes (no Big Bags and no octabins due to handling problems and potential damage).

// Minimum size of pieces: one of the dimensions should be greater than or equal to 100 mm



// Maximum size of pieces: full size board  
(2448 mm x 1008 mm x thickness)

// Boxes should be packed in a way that allows  
easy access for unloading.

// Each box should contain a clear identification tag  
including the following information:

- › Type of material (e.g. post-industrial PET foam waste)
- › Quantity (in kilograms)
- › Supplier data

// During handling, storage, packaging and transportation,  
care should be taken to ensure that the materials are not  
damaged or exposed to moisture or contamination. Any  
damage to the pallets must be avoided during transport,  
stacking and unloading.

### **Preferred packaging:**

Gaylord box with covering lid, placed on a pallet and secured  
by 2 PET straps; the size could be individually adjusted to  
match the typical size of ArmaPET waste streams generated  
at the plant and to ensure efficient transport and handling.



For further details about this programme, please contact  
our Supply Chain department:

**[pet.supply-chain@armacell.com](mailto:pet.supply-chain@armacell.com)**



All data and technical information are based on results achieved under the specific conditions defined according to the testing standards referenced. Despite taking every precaution to ensure that said data and technical information are up to date, Armacell does not make any representation or warranty, express or implied, as to the accuracy, content or completeness of said data and technical information. Armacell also does not assume any liability towards any person resulting from the use of said data or technical information. Armacell reserves the right to revoke, modify or amend this document at any moment. It is the customer's responsibility to verify if the product is suitable for the intended application. The responsibility for professional and correct installation and compliance with relevant building regulations lies with the customer. This document does not constitute nor is part of a legal offer to sell or to contract.

At Armacell, your trust means everything to us, so we want to let you know your rights and make it easier for you to understand what information we collect and why we collect it. If you would like to find out about our processing of your data, please visit our [Data Protection Policy](#).

© Armacell, 2021. All rights reserved. ArmaPET® is a trademark of the Armacell Group and is registered in the U.S. and other countries.  
00480 | Cut-Off Collection Guideline | ArmaPET | Booklet | 022021 | Global | EN

## ABOUT ARMACELL

---

As the inventor of flexible foam for equipment insulation and a leading provider of engineered foams, Armacell develops innovative and safe thermal and mechanical solutions that create sustainable value for its customers. Armacell's products significantly contribute to global energy efficiency making a difference around the world every day. With more than 3,300 employees and 27 production plants in 19 countries, the company operates two main businesses, Advanced Insulation and Engineered Foams. Armacell focuses on insulation materials for technical equipment, high-performance foams for acoustic and lightweight applications, recycled PET products, next-generation aerogel technology and passive fire protection systems.

For more company information, please visit:  
[www.armacell.com](http://www.armacell.com)

For product information, please visit:  
[www.armacell-core-foams.com](http://www.armacell-core-foams.com)

