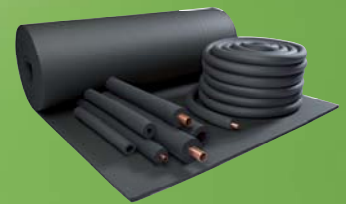


HT/Armaflex®

The flexible insulation solution for outdoor and high temperature applications



- Closed-cell structure provides built-in vapour barrier
- Maximum service temperature up to 150 °C
- High temperature applications

- UV resistant for outdoor use
- Thermal conductivity $\lambda_{40\text{ °C}} \leq 0.042 \text{ W/(m} \cdot \text{K)}$
- Water vapour resistance $\mu \geq 4,000$ (tubes) & $\geq 2,500$ (sheets)

C AU US

Technical Data - HT/Armaflex

Brief description	Highly flexible, closed cell insulation material based on extruded elastomeric foam with resistance to UV radiation.			
Material type	Synthetic EPDM rubber based foam.			
Colour	Black			
Applications	Thermal insulation of pipes, vessels and ducts for solar panels (including outdoors), motor vehicles, hot gas lines, steam and dual temperature lines.			
Special Features	Fulfills DIN 1988, resistant to UV radiation.			
Assembly	The Armaflex application guide should be consulted before use			

Property	Value/Assessment				Test ^{*1}	Super- vision ^{*2}	Special Remarks	
Temperature Range								
Temperature Range ¹	Max. service temperature ²	+ 150 °C (+175 °C short term)	(+ 85 °C for tapes)		D4866 D4867		Tested acc. to EN14707 EN 14706	
	Min. service temperature	-50 °C	(-200 °C)					
Thermal Conductivity								
Thermal Conductivity	ϑ_r	40	°C	$\lambda =$	D4778 D4890	○/●	Tested according to: BS 874 Part 2 1986 EN 12667 EN ISO 8497	
	tubes	$\lambda \leq$	0.042	W/(m · K)				$[36.92 + 0.125 \cdot \vartheta_m + 0.0008 \cdot (\vartheta_m - 30)^2]/1000$
	sheets	$\lambda \leq$	0.045	W/(m · K)				$[39.92 + 0.125 \cdot \vartheta_m + 0.0008 \cdot (\vartheta_m - 30)^2]/1000$
Water vapour diffusion resistance								
Water vapour diffusion resistance	tubes	μ	\geq	4,000	D4281		Tested according to EN 12086 EN 13469	
	sheets	μ	\geq	3,000				
Fire performance								
Reaction to fire	Class 1				GB5154 & EU5030 D4524	○/●	Tested according to: BS 476 Part 7: 1997	
	UL94							
Other fire class	Self-extinguishing, does not drip, does not spread flames							
Acoustic performance								
Reduction of structure-borne sound transmission	Sound Absorption Coefficient ISO 354:2003 up to 0.8						Also suitable for use in the prevention of sound passage	
Other technical features								
UV resistance ³	Good							
Health aspects	Dust & Fibre Free							
Resistance to	Building Materials: Very Good Chemicals: Consult Product Test List Ozone: Very Good UV: Very Good							
Environmental Aspects	ODP zero GWP zero				D4524			

1. For temperatures above +125 °C or below -50 °C please contact our Technical Department to request the corresponding technical information.

2. At high service temperatures certain hardening processes may start on the inner surface of the material. Investigations show that these changes have no detrimental impact on the physical and fire protection properties of the material, provided the material is installed in the correct way with all joints properly sealed. For specific applications please consult our technical services department.

3. In outdoor applications, the surface of the material may become discoloured and some minor surface cracks may appear. The visual appearance has no influence on the physical properties of the material however (i.e. thermal conductivity and behaviour in the event of fire).

*1 Further documents such as test certificates and approvals can be requested using the registration number given.

*2 ●: Official supervision by independent institutes and /or test authorities
○: In-house quality monitoring

All statements and technical information are based on results obtained under typical conditions. It is the responsibility of the recipient to verify with us that the information is appropriate for the specific use intended. Installation instructions are given in our Armaflex installation manual. Please consult our Technical Department before insulating stainless steel. Armaflex HT625 adhesive must be used to guarantee correct installation. For temperatures below -50 °C or above +150 °C, please consult our Technical Department for further information.

HT/Armaflex tubes



Length 2.0 m, Colour Black

Pipe max. Outside-Ø [mm]	Inner Ø min/ max mm (tube)	10 mm insulation thickness			13 mm insulation thickness		
		Code	m/carton		Code	m/carton	
10	11.5 - 13.0	HT-10X010 ●	192		HT-13X010 ●	140	
12	13.5 - 15.0	HT-10X012 ●	172		HT-13X012 ●	130	
15	16.5 - 18.0	HT-10X015	144		HT-13X015	112	
18	19.5 - 21.0	HT-10X018 ●	130		HT-13X018 ●	98	
22	23.5 - 25.0	HT-10X022	108		HT-13X022	84	
28	29.5 - 31.0	HT-10X028	82		HT-13X028	64	
35	36.5 - 38.5	HT-10X035 ●	60		HT-13X035 ●	50	
42	44.0 - 46.0	HT-10X042 ●	50		HT-13X042 ●	40	
48	50.0 - 52.0	-	-		HT-13X048 ●	32	
54	55.5 - 57.5	-	-		HT-13X054 ●	32	
60	62.0 - 64.0	-	-		HT-13X060 ●	28	
76	77.5 - 80.0	-	-		HT-13X076 ●	24	
89	91.0 - 94.0	-	-		HT-13X089 ●	18	

Pipe max. Outside-Ø [mm]	Inner Ø min/ max mm (tube)	19 mm insulation thickness			25 mm insulation thickness		
		Code	m/carton		Code	m/carton	
12	13.5 - 15.0	HT-19X012 ●	80		-	-	
15	16.5 - 18.0	HT-19X015	64		HT-25X015	50	
18	19.5 - 21.0	HT-19X018 ●	58		HT-25X018 ●	42	
22	23.5 - 25.0	HT-19X022	50		HT-25X022	36	
28	29.5 - 31.0	HT-19X028	40		HT-25X028	32	
35	36.5 - 38.5	HT-19X035	32		HT-25X035	24	
42	44.0 - 46.0	HT-19X042	24		HT-25X042	24	
48	50.0 - 52.0	HT-19X048	22		HT-25X048	20	
54	55.5 - 57.5	HT-19X054 ●	18		HT-25X054	18	
60	62.0 - 64.0	HT-19X060	16		HT-25X060	18	
76	77.5 - 80.0	HT-19X076 ●	18		HT-25X076 ●	12	
89	91.0 - 94.0	HT-19X089	16		HT-25X089 ●	12	

Length tolerance for tubes: ± 1,5 %
Thickness tolerance 10 - 13 mm ± 1,5 mm
 19 - 25 mm ± 2,0 mm

- Delivery 10 working days.

HT/Armaflex tubes endless (coils)



Colour Black

Pipe max. Outside-Ø [mm]	Inner Ø min/ max mm (tube)	13 mm insulation thickness			19 mm insulation thickness		
		Code	m/carton		Code	m/carton	
15	16.5 - 18.0	HT-13X015/E ●	26		HT-19X015/E ●	16	
18	19.5 - 21.0	HT-13X018/E ●	22		HT-19X018/E ●	14	
22	23.5 - 25.0	HT-13X022/E ●	18		HT-19X022/E ●	12	

- Delivery 10 working days.

HT/Armaflex continuous sheets (rolls)



Width 1.0 m, Colour Black

Thickness [mm]	Code	Roll length [m]	m ² /carton
10.0	HT-10-99/E	10	10
13.0	HT-13-99/E	8	8
19.0	HT-19-99/E	6	6
25.0	HT-25-99/E	4	4

Length tolerance for sheets ± 1.5 %
Thickness tolerance for sheets ± 1.5 mm

- Delivery 10 working days.

HT/Armaflex self-adhesive tapes



Colour Black

Code	Thickness [mm]	Length [m]	Width [mm]	Pieces/carton	
HT-TAPE	3	15	50	12	

- Delivery 10 working days.

HT/Armaflex accessories



Code	Description	Carton content	
ADH625/0,25	Armaflex HT625 one-component adhesive, 0.25 litre cans (with brush)	24	
ADH625/0,5	Armaflex HT625 one-component adhesive, 0.5 litre cans	12	
ADH625/1,0	Armaflex HT625 one-component adhesive, 1.0 litre cans	12	
CLEANER/1,0	Special cleaner for use with Armaflex Adhesive 520 and Adhesive HT625.	4	

- Delivery 10 working days.