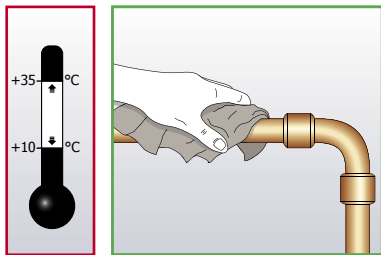
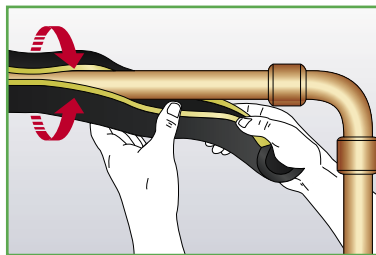


# Class 0 Armaflex<sup>®</sup> SELFSEAL

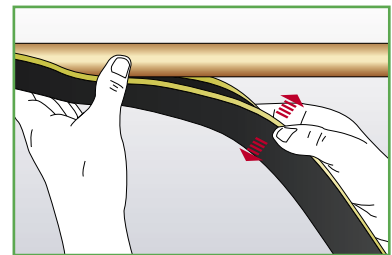
## INSULATING PIPES WITH ARMAFLEX SELFSEAL TUBES



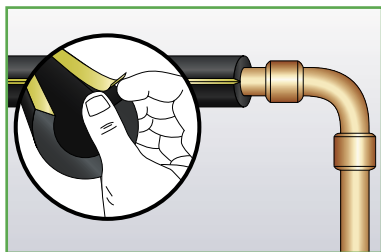
Clean all dust, dirt, oil and water from pipework using Armaflex cleaner where necessary. Install Armaflex when ambient temperature is between +10 and +35°C.



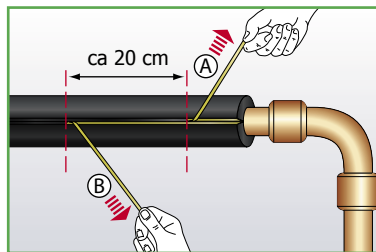
Open pre-slit Armaflex and snap onto pipe (the release paper is still protecting the self-adhesive strip)



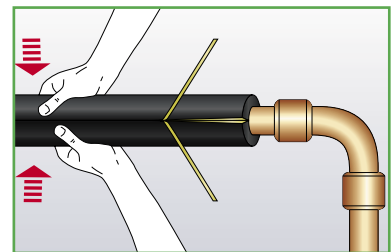
Adjust fitted Armaflex to ensure slit is easily accessible.



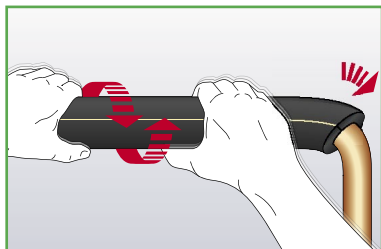
Locate the end of yellow release paper for the self-seal strip.



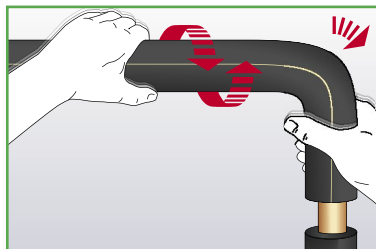
**Remove the yellow protection paper strip on both sides**, by drawing it away from the insulation. Please note: remove protective release paper strip from both sides!



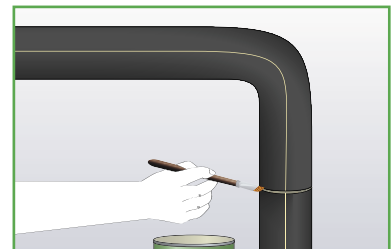
Close the slit seam and squeeze together with firm pressure, to ensure a permanent seal.



Push the Armaflex along the pipe using a circular motion. **Do not pull the insulation.**



Using a circular motion, push the Armaflex around bends. **Do not pull the insulation.**



Seal all joints with Armaflex Adhesive. **Do not stretch when sealing joints.**

**Note:** In principle, tube material can simply be slid over bends. However, with tight bends in pipes (small radius) there is a risk that the insulation will kink in the throat of the bend, reducing insulation thickness.

In the refrigeration/air-conditioning sector the calculated insulation thickness is then no longer achieved and condensation can occur on the surface of the insulation.

When installing Armaflex SelfSeal tubes there is the additional risk of compression of the adhesive lining in the bend area, which can lead to seams coming apart.

The following should be taken into account in these cases: If the insulation kinks and the adhesive seam is compressed the bends should be cut into segments to fit (see page 11).