



Installation Instructions for Armaflex DuoSolar VA

Armaflex DuoSolar is supplied in a coil format and is un-rolled on the job-site. It can be easily bent and reworked. The bending radius should never fall below 60 mm. The return pipe is easily identified as being the one that includes the electrical cable which is heat resistant to 180°C. During normal installation we recommend that proprietary hangers are used every one metre to support the whole system.

Cutting

1. First split the feed and return pipes and cut the insulation with a sharp knife. Be careful not to cut the electrical cable.
2. Push the insulation back along the pipe length, allowing easy access for cutting the flexible pipes.
3. Cut the pipes at right angles in the valley of the corrugation with a fine-toothed hacksaw or pipe cutter. If you use a pipe cutter be careful to use minimal force or the pipe will flatten. Do not cut the pipe too short.
4. Allow 1 or 2 additional valleys at each end of the pipe length to produce the sealing mechanism.
5. Cut the pipe cleanly and avoid "burrs" which could cause injury.



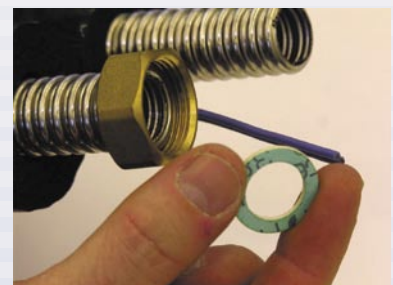
Pipe Preparation

1. Push the connection nut onto the pipe and leave by the edge of the insulation.
2. Fit the split ring into the first valley from the cut.
3. Use the threaded double nipple to manufacture the sealing surface of the pipe end by tightly connecting the nut to the double nipple with spanners or wrenches. Never clamp the flexible tubing in a vice.
4. Disconnect and check that a suitable surface has been made; this means that the retaining wave has been completely flattened against the split ring.
5. Remove any "burrs," so the washer will not be damaged, and insert washer, to check for a proper fit.
6. Ensure that the connection fitting, to which Armaflex Solar is to be joined, has enough thread to create a "true" seal. This also requires a surface face of the connection fitting at least 2mm thick.



Final Connection

1. Put sealing compound onto the sealing surface of the pipe.
2. Insert washer.
3. Screw tightly onto connection fitting.



Insulation Maintenance

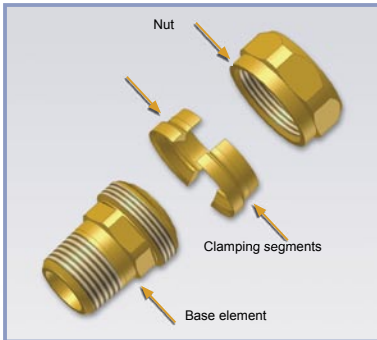
Should the need to replace the insulation arise, Armacell recommends HT/Armaflex for insulation of solar piping systems.

1. All insulation seam and jointing details shall be securely bonded together using Armaflex 625 adhesive.

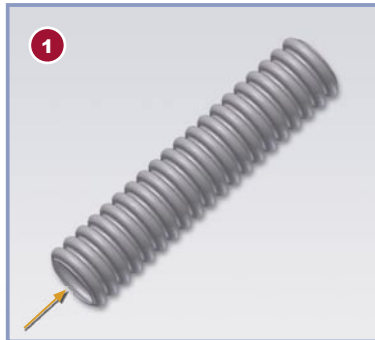
We guarantee the compatibility of components supplied by us. Many other commercially available insulation materials are either not capable of withstanding the temperature requirements of solar heating systems or may attack the stainless steel due to inherent high chlorine content. Carefully installed insulation protects the flexible piping against heat.



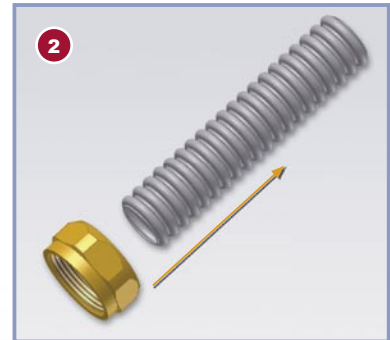
Installation instruction for coupling system for stainless steel corrugated hoses



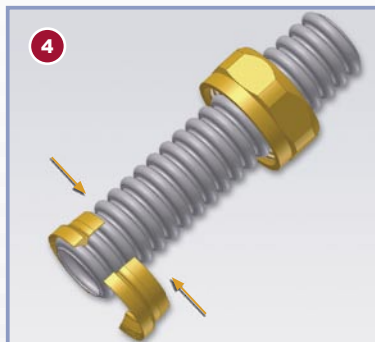
Coupling system components



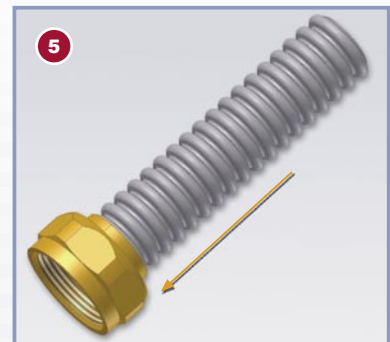
1 Cut the pipe in the valley of the corrugation with a pipe cutter



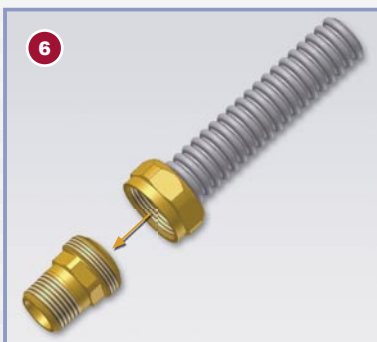
2 Push the union nut over the pipe



4 Insert clamping segments into the first valley...



5 ...and fix with the nut



6 Ensure that the sealing surface is neat and clean



7 Attach the pipe onto the base element and screw tightly