

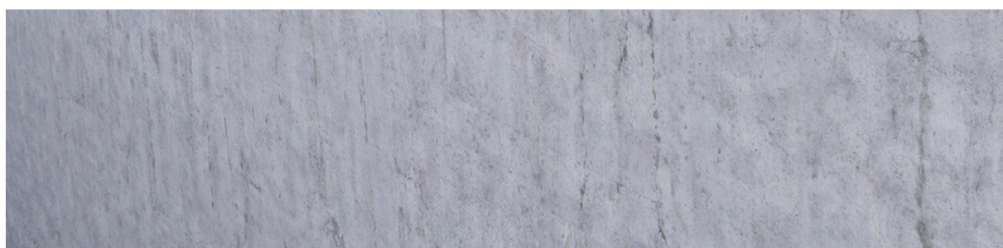


FOR SMALL FIRESTOP
PENETRATIONS

ArmaProtect CT

Cable tube for fire seals in walls and
floors

- // Blank openings
- // Cables and cable bundles
- // Conduit and conduit bundles
- // Combustible pipes
- // HVAC split-line combinations
- // Ideally for retrofitting applications



INSTALL IT. ENSURE SAFETY.

ArmaProtect™

Passive fire protection (PFP) products and systems are designed to provide fire-safe circumstances in the event of a fire emergency. Often built as part of the building component, PFP measures are not visible to building users and hence often overlooked as a fire protection measure.



// Fire safety is top priority

The requirements for fire protection are increasing. Regulated by building codes, buildings are sub-divided in fire compartments. In the event of a fire, they keep fire and smoke contained in a limited area for a given amount of time. Fire ratings typically range from 30 to 120 or even up to 240 minutes

ArmaProtect firestop products reliably seal off penetrations in walls, floors or service shafts and keep escape routes free of smoke and toxic gases. This gives occupants valuable time to leave the building and rescue teams unhindered access for evacuation.

// One-stop-shop solution

Whether flexible walls, rigid wall or rigid floors with cable and pipe penetrations – Armacell offers specifiers and installers compliant solutions for almost all firestop penetrations.

The range includes intumescent firestop wraps, firestop collars, coated firestop boards, intumescent firestop sealants and mortars.

The ArmaProtect portfolio is an ideal addition to ArmaFlex Protect, Armacell's unique firestop solution which combines high fire resistance, condensation control and thermal insulation in a single product.

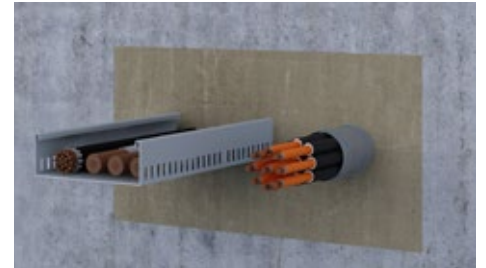


**SOLUTIONS
WITH EN TESTING
(ETA)**

The firestop portfolio from Armacell

Firestop penetration seals with cables, conduits, combustible and non-combustible pipes for residential, commercial and industrial building.

- ✓ Specifiable, reliable and flexible – **for each firestop application in residential, commercial and industrial buildings**
- ✓ Cost efficient solution – **the ideal choice for specifiers**
- ✓ Easy to install and maintain – **perfectly designed for the need of installers**
- ✓ Easy to inspect – **compliant solutions to fulfill the expectations of firestop inspectors**
- ✓ Firestop solutions for cable, pipe and mixed penetrations – **globally tested with European Technical Assessments and tested UL systems**
- ✓ Full approval range from small to large openings – **covering customer's requirement on the job sites**



ArmaProtect EXPS
Firestop sealant



ArmaProtect FW2 & FW3
Firestop wrap



ArmaProtect FC1 & FC2
Firestop collar



ArmaProtect CB
Coated firestop board
(includes **ArmaProtect ABLC**
Firestop coating and
ArmaProtect ABLF
Firestop filler mastic)



ArmaProtect CM
Firestop mortar



ArmaProtect CT
Firestop cable tube



ArmaProtect EFC1 & EFC2
Endless firestop collar

TECHNICAL DATA - ARMAPROTECT CT

Brief description	ArmaProtect CT consists for two half shells with intumescent inlay and a soft foam plug. It is designed for use as small penetration seals in core drillings or as cast-in-solutions.
Material type	PVC cable tube half shells with intumescent fabric inlay. Closure are made of soft foam plugs.
Additional material information	Half-shells can be closed with a click lock.
Product colour range	Grey half shells with red inner lining
Special features	Ideal as a retrofitting device.
Product range	Cable tubes including soft foam plugs are available in lengths of 150 mm (foam plug diameter: 60 mm, 90 mm and 116 mm), 200 mm (foam plug diameter: 90 mm and 116 mm) and 300 mm (foam plug diameter: 90 mm and 116 mm).
Applications	Firestop device for fire seals in walls and floors for blank openings, cables, cable bundles, combustible pipes and HVAC split-line combinations.
Installation	For professional use only. Refer to third party published listings, national approvals / assessments and Armacell's product literature for specific application details as well as before handling this product.

Approvals and compliance

Specification compliance	<ul style="list-style-type: none"> ETA-22/0062 acc. EN 1366-3
--------------------------	--

Property	Value / Assessment	Standard / Test method
Operating temperature		
Operating temperature	-40°C to 70°C (-40°F to 158°F)	
Processing Temperature		
Processing temperature	5°C to 25°C (41°F to 77°F)	
Fire Performance and Approvals		
Reaction to fire	Class E	EN 13501-1
Use category	Type X: intended for use in conditions exposed to weathering	EOTA TR 024
Passive fire protection		
Fire resistance of elements of construction	Drywall, concrete wall, aerated concrete wall, masonry wall, concrete floor: up to EI 120 UL approved system: FT-Rating - up to 3 hours	ANSI/UL 1479 (ASTM E814), EN 13501-2
Health and environment		
Health aspects	Please refer to the safety data sheet available on our website.	
Emission of dangerous substances	No dangerous substances.	
Other technical features		
Shelf life	No shelf life.	
Storage	Store / Transport in a cool and dry place with an ambient temperature of 5 °C to 25 °C (41°F to 77°F) and protect from frost.	

Firestop cable tube

Item	Description	Content [quantity]
PRO-CT-C060	ArmaProtect CT Firestop Cable tube plug Ø 60 mm packed as a set of 10 soft plugs	1 piece
PRO-CT-C090	ArmaProtect CT Firestop Cable tube plug Ø 90 mm packed as a set of 10 soft plugs	1 piece
PRO-CT-C116	ArmaProtect CT Firestop Cable tube plug Ø 116 mm packed as a set of 10 soft plugs	1 piece
PRO-CT-L090	ArmaProtect CT Firestop Cable tube 300 mm / Ø 90 mm packed as 1 cable tube with 2 soft plugs	6 piece
PRO-CT-L116	ArmaProtect CT Firestop Cable tube 300 mm / Ø 116 mm packed as 1 cable tube with 2 soft plugs	12 piece
PRO-CT-M090	ArmaProtect CT Firestop Cable tube 200 mm / Ø 90 mm packed as 1 cable tube with 2 soft plugs	8 piece
PRO-CT-M116	ArmaProtect CT Firestop Cable tube 200 mm / Ø 116 mm packed as 1 cable tube with 2 soft plugs	18 piece
PRO-CT-S060	ArmaProtect CT Firestop Cable tube 150 mm / Ø 60 mm packed as 1 cable tube with 2 soft plugs	30 piece
PRO-CT-S090	ArmaProtect CT Firestop Cable tube 150 mm / Ø 90 mm packed as 1 cable tube with 2 soft plugs	12 piece
PRO-CT-S116	ArmaProtect CT Firestop Cable tube 150 mm / Ø 116 mm packed as 1 cable tube with 2 soft plugs	24 piece

All data and technical information are based on results achieved under the specific conditions defined according to the testing standards referenced. Despite taking every precaution to ensure that said data and technical information are up to date, Armacell does not make any representation or warranty, express or implied, as to the accuracy, content or completeness of said data and technical information. Armacell also does not assume any liability towards any person resulting from the use of said data or technical information. Armacell reserves the right to revoke, modify or amend this document at any moment. It is the customer's responsibility to verify if the product is suitable for the intended application. The responsibility for professional and correct installation and compliance with relevant building regulations lies with the customer. This document does not constitute nor is part of a legal offer to sell or to contract.

At Armacell, your trust means everything to us, so we want to let you know your rights and make it easier for you to understand what information we collect and why we collect it. If you would like to find out about our processing of your data, please visit our Data Protection Policy.

Trademarks followed by ® or ™ are trademarks of the Armacell Group. © Armacell, 2023 All rights reserved.

ArmaProtect | ArmaProtect CT | Brochure | 052024 | en-PH

ABOUT ARMACELL

As the inventor of flexible foam for equipment insulation and a leading provider of engineered foams, Armacell develops innovative and safe thermal and mechanical solutions that create sustainable value for its customers. Armacell's products significantly contribute to global energy efficiency making a difference around the world every day. With more than 3,300 employees and 25 production plants in 19 countries, the company operates two main businesses, Advanced Insulation and Engineered Foams. Armacell focuses on insulation materials for technical equipment, high-performance foams for acoustic and lightweight applications, recycled PET products, next-generation aerogel technology and passive fire protection systems.

For more information, please visit:
www.armacell.com


MAKING A DIFFERENCE AROUND THE WORLD