



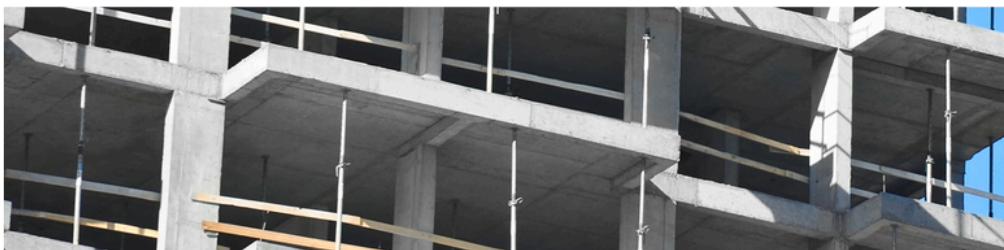
SEALANT ACCESSORIES

FillPro Open Cell Backer Rod

Highly compressible 'backing' for use in non-uniform joints or cracks to help control the amount or the depth of sealant in a gap.

- // Chemically inert
- // Compatible with most hot-pour and cold-pour sealants
- // Distributors in U.S. and Canada
- // ASTM C1330 Type 0

www.armacell.com



 **armacell**[®]
MAKING A DIFFERENCE AROUND THE WORLD

TECHNICAL DATA - FILLPRO OPEN CELL BACKER ROD

Brief description	Flexible, open cell polyurethane foam backer rod in continuous coils.
Applications	Commonly used in expansion and contraction joints, window glazing, curtain wall construction partitions, precast assemblies and copings, parking decks, bridge construction, etc.
Installation	The joint depth must be great enough to allow for the proper installation of the FillPro Open Cell backer rod and the hot or cold sealant or caulking material. Joint walls must be smooth, even and be free of any loose materials. Joints should also be dry and frost free. With a correctly-sized tool or by hand, insert FillPro Open Cell rod into joint at a level recommended by the sealant manufacturer. Cold applied sealants generally recommend that the depth of the joint after the backer rod is installed be one half the width. In hot pour applications, it is generally recommended the depth of the joint be a 1:1 of backer rod to sealant.
Remarks	FillPro Open Cell is an ideal non-gassing backer rod used to control sealant and caulking depth and create a back stop to allow proper sealant tooling and configuration, to allow proper sealant airing and to yield a proper bond break between backup material and sealant. Limiting the depth of the sealant prevents excessive use, saving on caulk or sealant. Compressibility is ideal for non-uniform joint sizes.

Property	Value / Assessment				Standard / Test method
Temperature range					
Service temperature	Min. °C	Min. °F	Max. °C	Max. °F	
	-51	-60	260	500	
Physical attributes					
Density	1.7 lbs/cu.ft				ASTM D1622
Mechanical properties					
Tensile strength	25 lbs maximum				ASTM D 1623
Compression deflection					
Compression deflection	psi (kPa) 1.4				ASTM D5249
Other technical features					
Additional remarks	Outgassing (# of bubbles) 0, Compression Recovery, % min >98, Classification Type 0, Elongation 75% min & Compression Set @ 90% 15% (max)				ASTM C1253, ASTM C1330, ASTM D5249, ASTM D5249

All data and technical information are based on results achieved under the specific conditions defined according to the testing standards referenced. Despite taking every precaution to ensure that said data and technical information are up to date, Armacell does not make any representation or warranty, express or implied, as to the accuracy, content or completeness of said data and technical information. Armacell also does not assume any liability towards any person resulting from the use of said data or technical information. Armacell reserves the right to revoke, modify or amend this document at any moment. It is the customer's responsibility to verify if the product is suitable for the intended application. The responsibility for professional and correct installation and compliance with relevant building regulations lies with the customer. This document does not constitute nor is part of a legal offer to sell or to contract.

At Armacell, your trust means everything to us, so we want to let you know your rights and make it easier for you to understand what information we collect and why we collect it. If you would like to find out about our processing of your data, please visit our Data Protection Policy.

Trademarks followed by © or TM are trademarks of the Armacell Group. © Armacell, 2023. All rights reserved.

ArmaComp | FillPro Open Cell | TDS | 052024 | en-US

ABOUT ARMACELL

As the inventor of flexible foam for equipment insulation and a leading provider of engineered foams, Armacell develops innovative and safe thermal and mechanical solutions that create sustainable value for its customers. Armacell's products significantly contribute to global energy efficiency making a difference around the world every day. With more than 3,300 employees and 25 production plants in 19 countries, the company operates two main businesses, Advanced Insulation and Engineered Foams. Armacell focuses on insulation materials for technical equipment, high-performance foams for acoustic and lightweight applications, recycled PET products, next-generation aerogel technology and passive fire protection systems.

For more information, please visit:
www.armacell.com

