



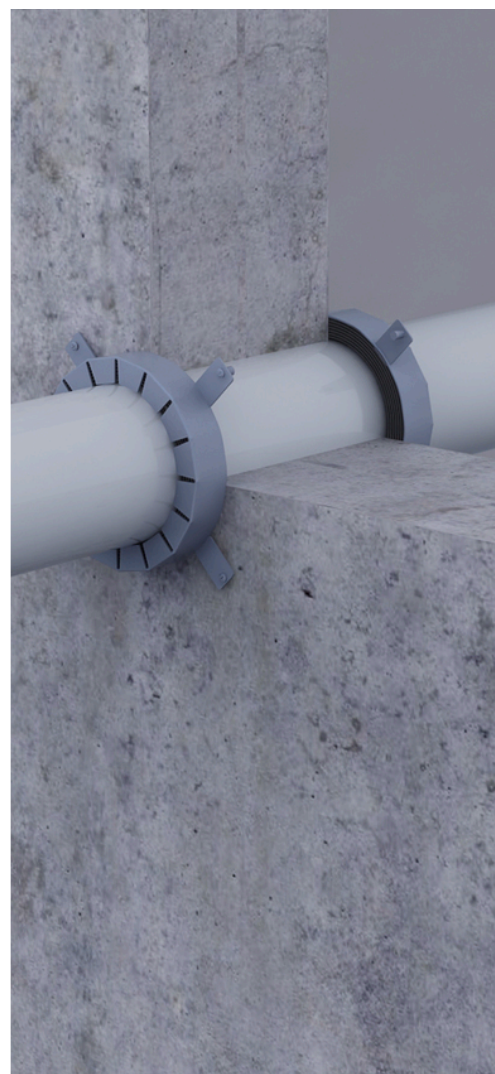
FOR FIRESTOP PIPES UP TO
LARGE DIAMETERS

ArmaProtect FC2

Firestop collar for fire seals in walls and
floors

// For sealing of combustible pipes without insulation up
to 400 mm diameter

www.armacell.eu



 **armacell**[®]
ArmaProtect[®]

TECHNICAL DATA - ARMAPROTECT FC2

Brief description	ArmaProtect FC2 is a solid metal sleeve equipped with several layers of intumescent material to maintain the fire resistance performance of fire penetrations in walls and floors.
Material type	Powder-coated sheet steel housing (Ø up to 200mm) / galvanised sheet steel housing (Ø ≥ 225mm) with flexible intumescent strip.
Product colour range	Housing: grey Intumescent material: anthracite
Special features	Easy visual inspection.
Product range	32 mm to 400 mm diameter.
Applications	Firestop collar for sealing combustible pipes without insulation.
Installation	For professional use only. Refer to third party published listings, national approvals / assessments and Armacell's product literature for specific application details as well as before handling this product.

Property	Value / Assessment	Standard / Test method
Operating temperature		
Operating temperature	-40°C to 70°C (40°F to 158°F)	
Processing temperature		
Processing temperature	5°C to 25°C (41°F to 77°F)	
Fire Performance and Approvals		
Reaction to fire	Housing: Class A1 Inlay: Class E	EN 13501-1
Use category	Type X: intended for use in conditions exposed to weathering	EOTA TR 024
Passive fire protection		
Fire resistance of elements of construction	Drywall, concrete wall, aerated concrete wall, masonry wall, concrete floors: up to EI 120	EN 13501-2
Physical attributes		
Thickness	1,0 mm up to 8,0 mm	EOTA TR 024
Density	1200 kg/m ³ ± 10 %	EOTA TR 024
Mechanical properties		
Expansion ratio	Inlay: 18 to 38 times	EOTA TR 024
Other technical features		
Storage	Store / Transport in a cool and dry place with an ambient temperature of 5 °C to 25 °C (41°F to 77°F) and protect from frost.	

Firestop collar

Item	Description	Primary content [pieces]
PRO-FC2-032	ArmaProtect FC2 Firestop collar Ø 32 mm	50 piece
PRO-FC2-040	ArmaProtect FC2 Firestop collar Ø 40 mm	50 piece
PRO-FC2-050	ArmaProtect FC2 Firestop collar Ø 50 mm	50 piece
PRO-FC2-063	ArmaProtect FC2 Firestop collar Ø 63 mm	50 piece
PRO-FC2-075	ArmaProtect FC2 Firestop collar Ø 75 mm	50 piece
PRO-FC2-090	ArmaProtect FC2 Firestop collar Ø 90 mm	40 piece
PRO-FC2-110	ArmaProtect FC2 Firestop collar Ø 110 mm	25 piece
PRO-FC2-125	ArmaProtect FC2 Firestop collar Ø 125 mm	20 piece
PRO-FC2-140	ArmaProtect FC2 Firestop collar Ø 140 mm	16 piece
PRO-FC2-160	ArmaProtect FC2 Firestop collar Ø 160 mm	12 piece
PRO-FC2-180	ArmaProtect FC2 Firestop collar Ø 180 mm	5 piece
PRO-FC2-200	ArmaProtect FC2 Firestop collar Ø 200 mm	5 piece
PRO-FC2-225	ArmaProtect FC2 Firestop collar Ø 225 mm	1 piece
PRO-FC2-250	ArmaProtect FC2 Firestop collar Ø 250 mm	1 piece
PRO-FC2-280	ArmaProtect FC2 Firestop collar Ø 280 mm	1 piece
PRO-FC2-300	ArmaProtect FC2 Firestop collar Ø 300 mm	1 piece
PRO-FC2-315	ArmaProtect FC2 Firestop collar Ø 315 mm	1 piece
PRO-FC2-355	ArmaProtect FC2 Firestop collar Ø 355 mm	1 piece
PRO-FC2-400	ArmaProtect FC2 Firestop collar Ø 400 mm	1 piece

Accessories

Item	Description	Primary content [pieces]
PRO-ID-SET	ArmaProtect ID identification plate set (5 pcs.)	14 set

OUR CUSTOMERS EXPECT THE BEST. WE WORK HARD TO GO BEYOND THAT AND EXCEED THEIR EXPECTATIONS.

At Armacell we want to create a unique customer experience. We understand the challenges of today's construction industry and support you in the successful delivery of your projects. From planning to delivery, our 360° service supports you throughout the entire process.



SERVICE AND TECHNICAL INFORMATION AVAILABLE 24/7

At Armacell, we do everything we can to ensure your project runs smoothly. This is why the information about the Armacell services you benefit from is available 24/7 from Armacell.com website as well as from our planning tools (BIM, specification documents, ArmaWin, as well as our sustainable building policy)

DEDICATED LOCAL CONTACTS

We aim to create open lines of communication with our customers. From on-site trainings and webinars by our Armacell technical experts advising on project planning and safety instructions to our local dedicated sales and customer services, your local Armacell dedicated team is working in partnership with you to achieve more together.

DIGITAL INFORMATION FLOWS

From order to delivery, we also provide you with digital information flows such as EDI and other well-known data formats that are widely used in the construction sector worldwide.



OUR STANDARD LOGISTICS SERVICES INCLUDE

- // Material ordered will be shipped from our facilities within 48 hours after order confirmation
- // Full truck loads and full pallets (not mixed – 1 SKU per pallet)
- // List prices in this document are based on Ex Works
- // Container loading with standard goods
- // Customs clearance (including documentation) for standard deliveries outside EU
- // Dangerous goods process for road freight

WE GO BEYOND STANDARD SERVICES AND ALSO PROPOSE YOU ADDITIONAL SERVICES*

OPIMISED PACKAGING

- Edge protection
- Strapping
- Doubled stretching
- Reinforced cardboard with extra layer
- Additional warning tape

LABELLING

- Extra label for transport instructions

EXTRA DELIVERY SERVICES

- Just in time delivery
- Delivery with lifting platform for partial or complete load
- Express and direct shipments
- Booking a delivery time slot via your EDP system
- Forklift truck for unloading at construction site
- Air and sea freight deliveries
- Dangerous goods shipment process for air and sea freight



To mitigate cost increases and reduce waste generation, we also propose a pallet return service* by which pallets can be handed at Armacell collection points.

* Please contact your local Customer Service Centre to see which of these services apply to your country.

All data and technical information are based on results achieved under the specific conditions defined according to the testing standards referenced. Despite taking every precaution to ensure that said data and technical information are up to date, Armacell does not make any representation or warranty, express or implied, as to the accuracy, content or completeness of said data and technical information. Armacell also does not assume any liability towards any person resulting from the use of said data or technical information. Armacell reserves the right to revoke, modify or amend this document at any moment. It is the customer's responsibility to verify if the product is suitable for the intended application. The responsibility for professional and correct installation and compliance with relevant building regulations lies with the customer. This document does not constitute nor is part of a legal offer to sell or to contract.

At Armacell, your trust means everything to us, so we want to let you know your rights and make it easier for you to understand what information we collect and why we collect it. If you would like to find out about our processing of your data, please visit our Data Protection Policy.

© Armacell, 2022. All rights reserved. Trademarks followed by © or ™ are trademarks of the Armacell Group.

ArmaProtect | ArmaProtect FC2 | Brochure | 012023 | en-IN

ABOUT ARMACELL

As the inventors of flexible foam for equipment insulation and a leading provider of engineered foams, Armacell develops innovative and safe thermal, acoustic and mechanical solutions that create sustainable value for its customers. Armacell's products significantly contribute to global energy efficiency, making a difference around the world every day. With more than 3200 employees and 27 production plants in 19 countries, the company operates two main businesses, Advanced Insulation and Engineered Foams. Armacell focuses on insulation materials for technical equipment, high-performance foams for high-tech and lightweight applications and next generation aerogel blanket technology.



For more information, please visit:
www.armacell.com